



**Boeing Commercial Aviation Services**  
**767- 400 LANDING GEAR INSPECTION**  
**JULY 31 – AUGUST 1, 2006**  
**DELTA AIRLINES**

**JOHN A. FALKOWSKI - SERVICE ENGINEER**  
**LANDING GEAR SYSTEMS**  
**23 JANUARY 2007**  
**HCAT MEETING**  
**NEW ORLEANS, La**

# AIRPLANE DATA

---

- **Delivery Date – 09/26/2000**
- **Line Number - 807**
- **Hours – 19515**
- **Cycles - 6599**

# MLG

---

**HANGAR VISIT DID NOT ALLOW FOR AIRPLANE  
TO BE PUT ON JACKS**

**STRUTS WERE PRESSURIZED EXPOSING ABOUT  
A FOOT OF INNER CYLINDER**

**RIGHT REAR OUTBOARD WHEEL & BRAKE  
REMOVED**

**SURFACE ROUGHNESS READINGS TAKEN AT  
FORE, AFT, RIGHT, AND LEFT POSITIONS**

## **MLG (CONTINUED)**

---

- **READINGS WERE UNIFORMLY CONSISTENT AROUND OD OF INNER CYLINDER – NO READINGS ABOVE 2.5 MICRONS**
- **DELTA HAS NEVER EXPERIENCED A SEAL REPLACEMENT ON THE GEAR**

# SURFACE FINISH READINGS

767-400 MLG Inner Cylinder P/N 161T7120 LEFT



767-400 MLG Inner Cylinder P/N 161T7120 RIGHT



## Right MLG Gear

---



## Left MLG

---



767-400 MLG Inner Cylinder P/N 161T7120  
RIGHT REAR INBOARD AXLE

DATE 01-01-2000  
TIME 00:08:24

STAND ANS11995  
PROFILE R  
FILTER GAUSS  
EVA-L 0.05in  
N 5  
 $\lambda_c$  0.01in  
 $\lambda_s$  100 $\mu$ in

PARAMETER  
R<sub>mrd</sub>  
N 1  
REF.LINE 0%  
S.LEVEL 10 $\mu$ in

M-SPEED 0.01in/s  
RANGE AUTO  
PRE/POST ESC  
ON

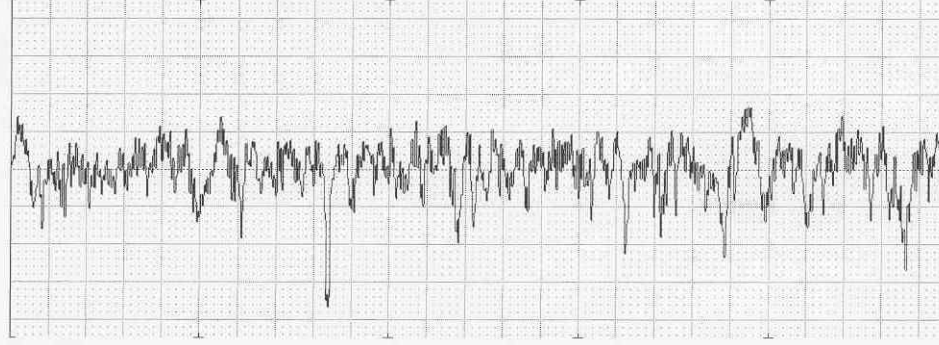
**R-PROFILE**  
EVA-L 0.05in  
 $\lambda_c$  0.01inX5

Ra 9.8 $\mu$ in  
Ry 99.9 $\mu$ in  
Rz 76.8 $\mu$ in  
R<sub>mrd</sub> (1.0%) 1.5%  
[10 $\mu$ in]

**R-PROFILE**  
EVA-L 0.05in  
 $\lambda_c$ =0.01inX5  
→x 10K

x 100

Ver. 100.000 $\mu$ in/in  
Hor. 0.010in/in



# Right MLG Axle

---



# NLG Inner Cylinder - Chrome

---



DATE 01-01-2000  
TIME 00:18:22

STAND ANS I1995  
PROFILE R  
FILTER GAUSS  
EVA-L 0.05in  
N 5  
 $\lambda_c$  0.01in  
 $\lambda_s$  100 $\mu$ in

PARAMETER  
R<sub>mrd</sub>  
N 1  
REF.LINE 0%  
S.LEVEL 10 $\mu$ in

M-SPEED 0.01in/s  
RANGE AUTO  
PRE/POST ESC  
ON

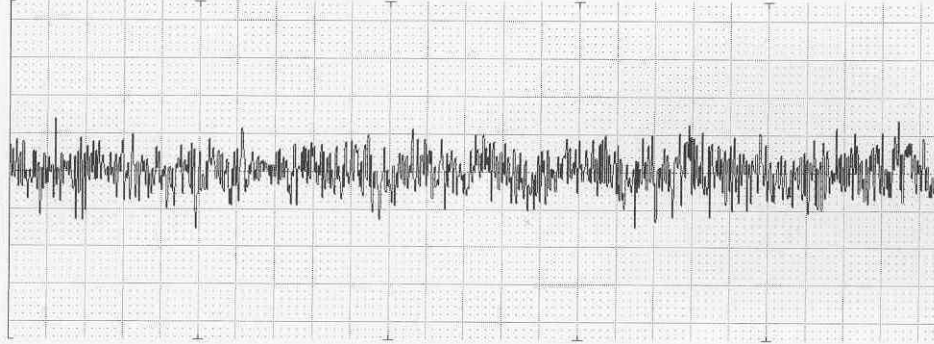
**R-PROFILE**  
EVA-L 0.05in  
 $\lambda_c$  0.01inX5

R<sub>a</sub> 0.7 $\mu$ in  
R<sub>y</sub> 6.4 $\mu$ in  
R<sub>z</sub> 5.3 $\mu$ in  
R<sub>mrd</sub> (1.0%)  
[10 $\mu$ in] 100%

**R-PROFILE**  
EVA-L 0.05in  
 $\lambda_c$  0.01inX5

→ x 100K  
x 100

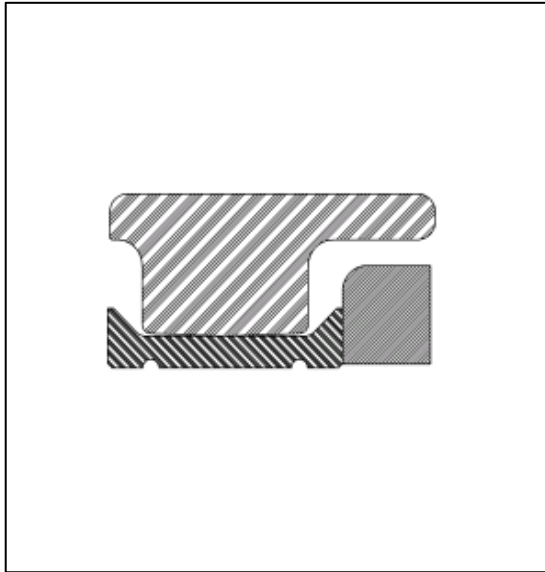
Ver. 10.000 $\mu$ in/in  
Hor. 0.010in/in



# 767-400 NLG Inner Cylinder

# ACGL-RING

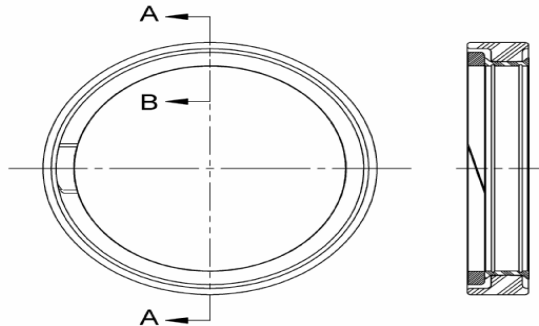
---



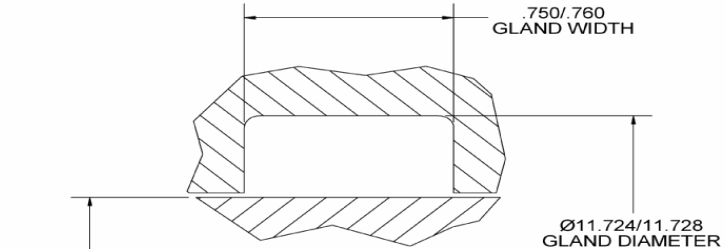
# AGTL RING SEAL

THE INFORMATION CONTAINED ON THIS DRAWING IS CONSIDERED PROPRIETARY TO OUR COMPANY IN THAT THESE ITEMS, COMPONENTS, AND PROCESSES WERE DEVELOPED AT PRIVATE EXPENSE. THIS INFORMATION SHALL NOT BE RELEASED, DISCLOSED, OR DUPLICATED FOR PROCUREMENT OR MANUFACTURING. REPRODUCTION HEREOF, IN WHOLE OR IN PART, SHALL BE MARKED WITH THIS LEGEND

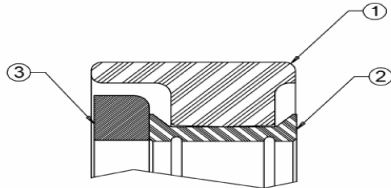
REVISIONS			
REV	DESCRIPTION	DATE	APPROVED



SECTION A-A



GLAND DETAILS



SECTION A-B (ENLARGED)

ITEM	QTY	GTC COMPONENT P/N	DESCRIPTION	MATERIAL	MAT'L SPEC.
③	1	265-71101-000-0380	BACK-UP RING (SCARF CUT)	ARLON 1330 (LUBRICATED PEEK)	GTS-0008
②	1	265-71101-000-3891	CAP COMPONENT (GROOVED AND SOLID)	AVALON 89 (THERMOPLASTIC AND CARBON FILLED, LUBRICATED PTFE)	GTS-0046
①	1	265-71101-160-0000	ELASTOMERIC ENERGIZER	160 NITRILE CMP'D, 70 DURO SHORE A, FER MIL-P-25732, AS APPLICABLE	160 CMP'D

NOTES

1. ALL DIMENSIONS ARE IN INCHES.
2. DO NOT SCALE DRAWING.
3. GTC P/N = 265-71101-160-6061.

**UNCONTROLLED**

MATERIAL  
SEE BILL OF MATERIALS



PO BOX 305  
2075 DETWILER ROAD  
KULPSVILLE, PA 19443

**AGTL RING SEAL ASSEMBLY  
ROD TYPE**

DRAWN:	SRD	DATE:	08/16/01
CHECKED:	SRD	DATE:	08/16/01
APPROVED:	M.James	DATE:	08/17/01

SIZE	CAGE NO.	DWG NO.	REV.
A	5F573	265-71101-160-6061/ASY	-
SCALE:	FILE:	SHEET:	
NONE	P:\as1\DWG\265A\265-71101-160-6061	1 OF 1	

DWG NO. 265-71101-160-6061/ASY

# ACKNOWLEDGEMENTS

---

- **KIMBERLY DAVIS – DELTA AIRLINES**
- **RICK THOMAN – GREENE TWEED**