

PROSURF

Co-ordination Action
Promotion and Support of SME Research and
Innovation in the Surface Finishing and Printed Circuit
Manufacturing Sectors
PROSURF

January, 2007



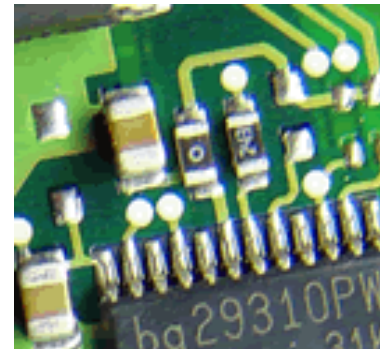
C-Tech Innovation
...advantage through technology

SME Sectors

- “Surface finishing” refers to any process that modifies the surface of a material or any process that applies a coating to the surface of a material to confer new properties.



- “Printed circuit board manufacturing” refers to the production of circuit boards for electronic equipment.



Outline Structure of Work Plan

1. Analysis and benchmarking of sectoral technological and business/market needs
2. Formulate a sectoral research strategy and road map for future implementation.
3. Integration of SME sectoral research needs through exchange and dissemination of information, training and networking
4. Facilitation of SME innovation in target sectors by establishing best practice in implementing the research strategy



Outline Work Plan Timing

	Workprogramme Stages	Year 1				Year 2				Year 3			
		September 05 - August 06				September 06 - August 07				September 07 - August 08			
1	Analysis and Benchmarking	█	█	█	█								
2	Formulate Sectoral Research Strategy					█	█	█	█				
3	Dissemination, Training, Networking			█	█	█	█	█	█	█	█	█	█
4	Best Practice & Strategy Implementation									█	█	█	█
	FP7 Start-up							█	█	█	█	█	█



Target FP7 Activities

- **Co-operation Programme**
- **Nanotechnologies, Materials, New Production Technologies (NMP):**
 - NMP is particularly relevant to SMEs due to their needs and vital role in advancing and using modern technologies. As well as SMEs being able to participate in all Theme 4 calls for proposals, there will be dedicated calls for SME-focussed projects
- **Minor involvement:**
 - Environment?
 - Energy?
 - Aeronautics and air transport?



Target FP7 Activities

- **Capacities Programme**
- Research for the benefit of SMEs
 - **Research for SMEs:**
 - Support for small groups of innovative SMEs which outsource research to RTD performers; to solve common or complementary technological problems for the SMEs involved
 - **Research for SME associations:**
 - Support for SME associations, which outsource research to RTD performers; to develop technical solutions to problems common to a large number of SMEs in a specific sector or segment of the value chain



Target FP7 Activities

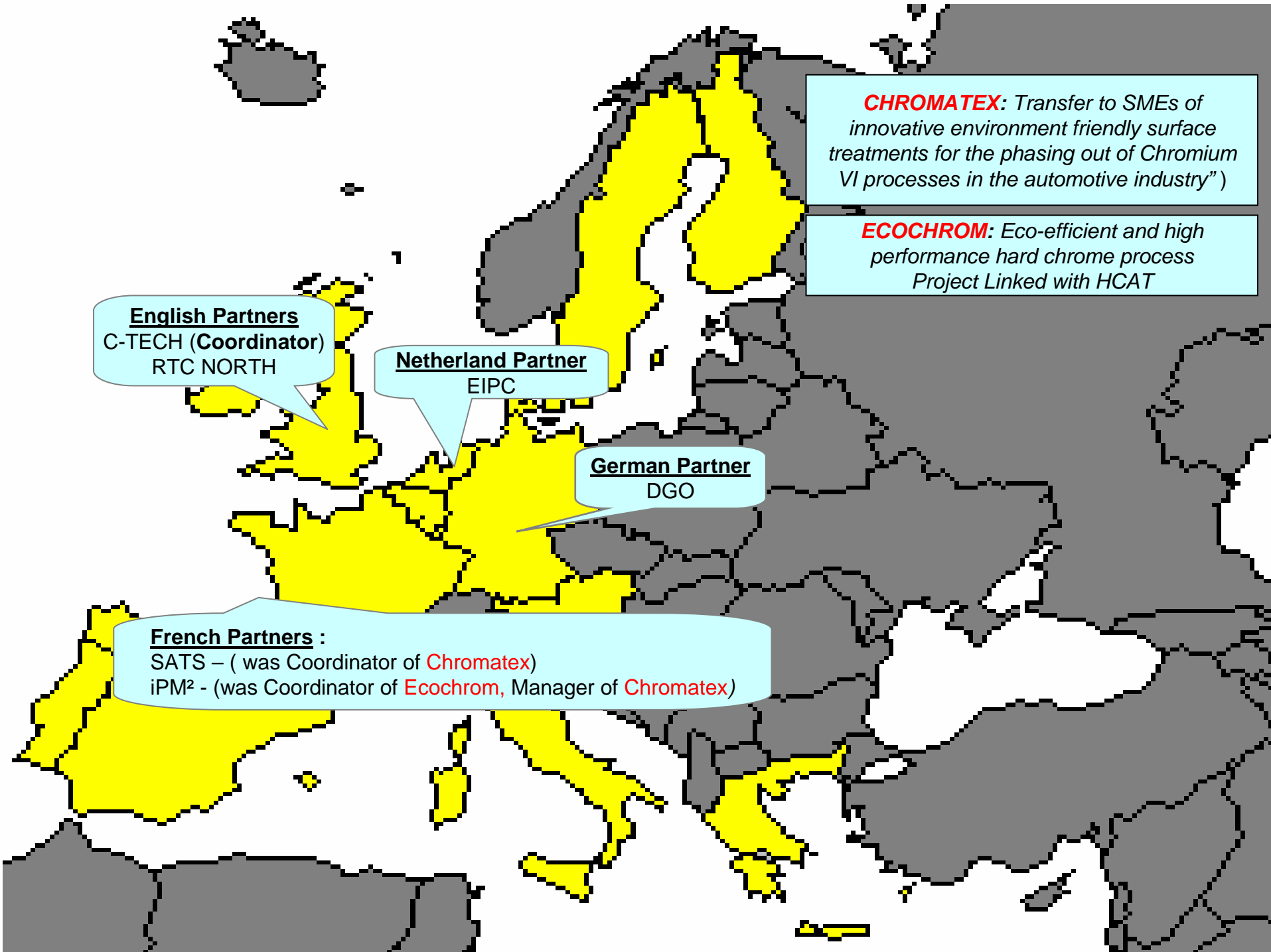
- **Human Resources and Mobility**
- **Industry-Academia Partnerships and Pathways:**
 - This action will seek to open and foster dynamic pathways between public research organisations and private commercial enterprises, including in particular SMEs



Dissemination

- **Dissemination Targets**
 - Prime target is high tech SMEs with research capability
 - Other SMEs to enhance capacity for research
 - Most relevant research providers
 - Large end user companies
- **Dissemination Routes**
 - In early stages of FP7, selective direct targeting of Trade Association (& other partner) Memberships and their collaborators
 - Wider dissemination towards the end of the project





CHROMATEX: Transfer to SMEs of innovative environment friendly surface treatments for the phasing out of Chromium VI processes in the automotive industry”)

ECOCHROM: Eco-efficient and high performance hard chrome process Project Linked with HCAT

English Partners
C-TECH (Coordinator)
RTC NORTH

Netherland Partner
EIPC

German Partner
DGO

French Partners :
SATS – (was Coordinator of Chromatex)
iPM² - (was Coordinator of Ecochrom, Manager of Chromatex)